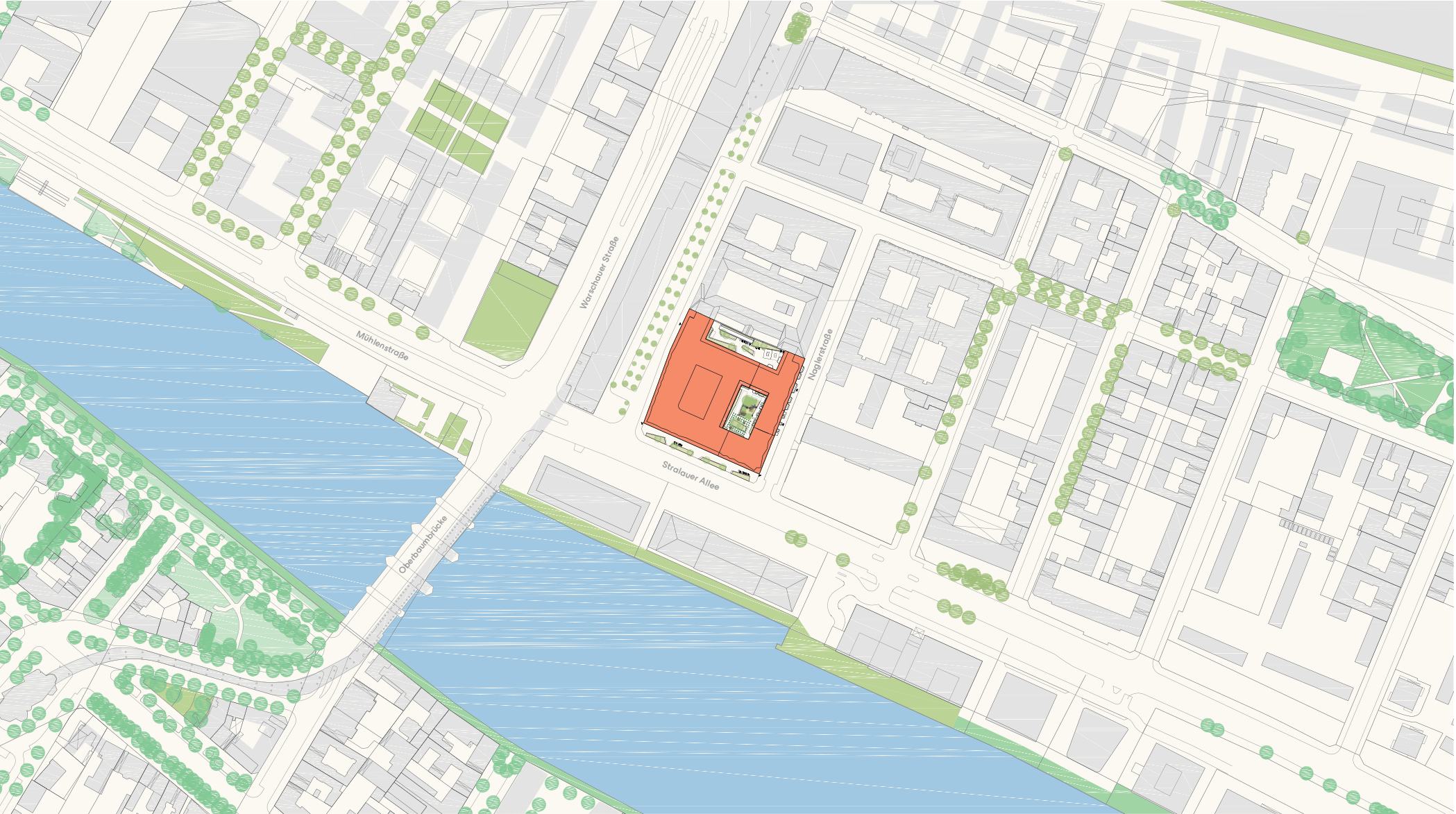
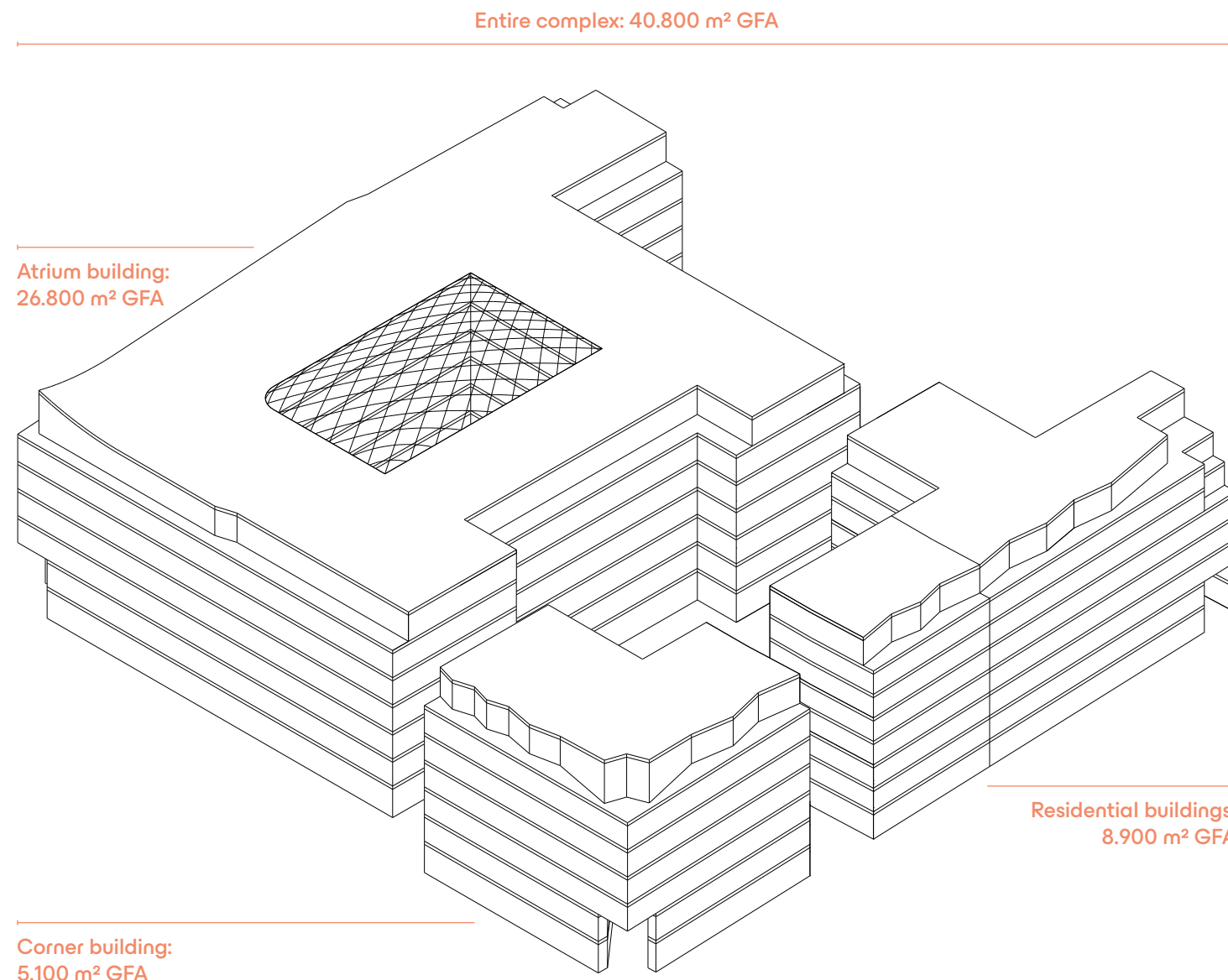


Timeless beauty
here and now

FORTY4



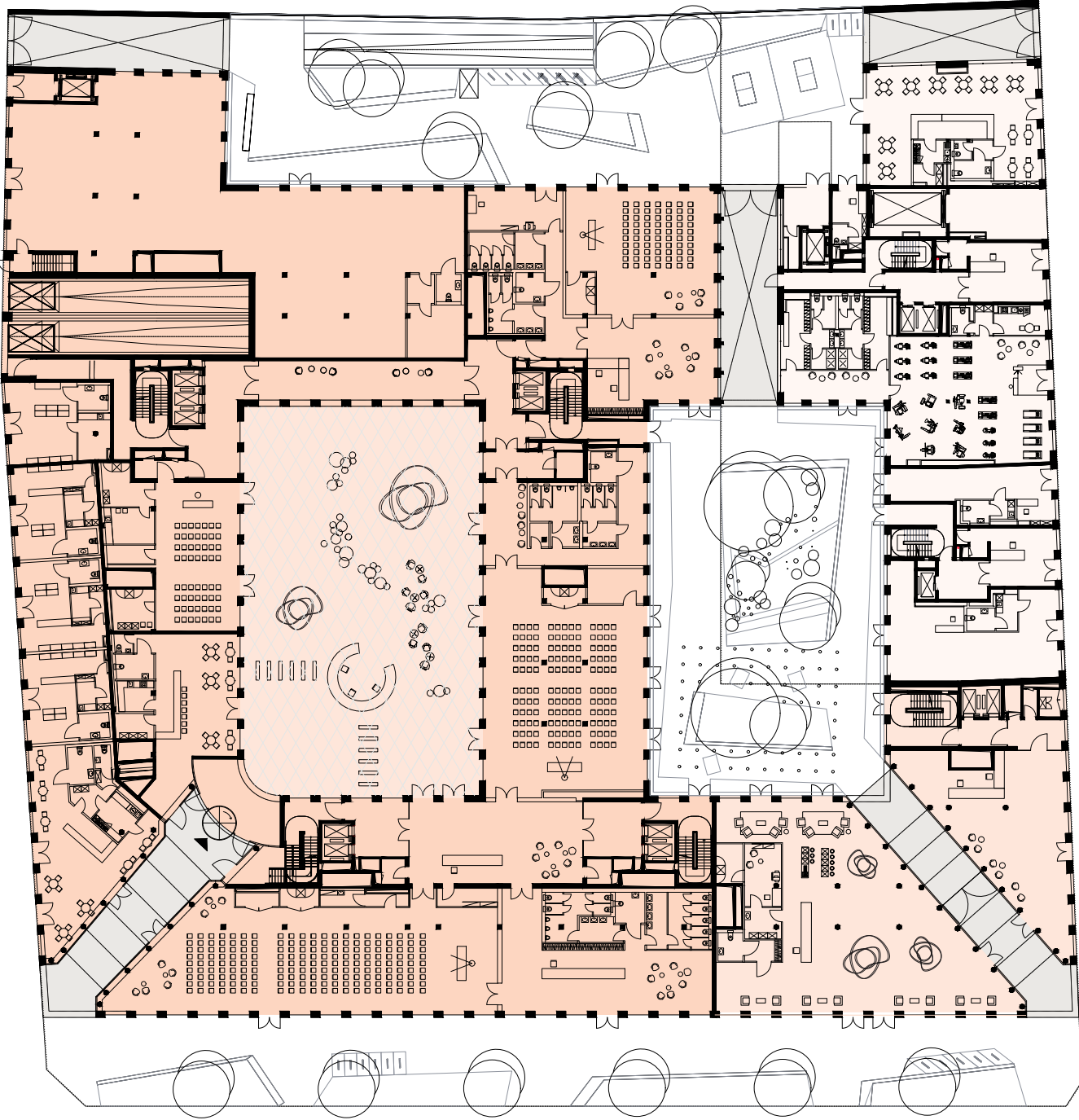


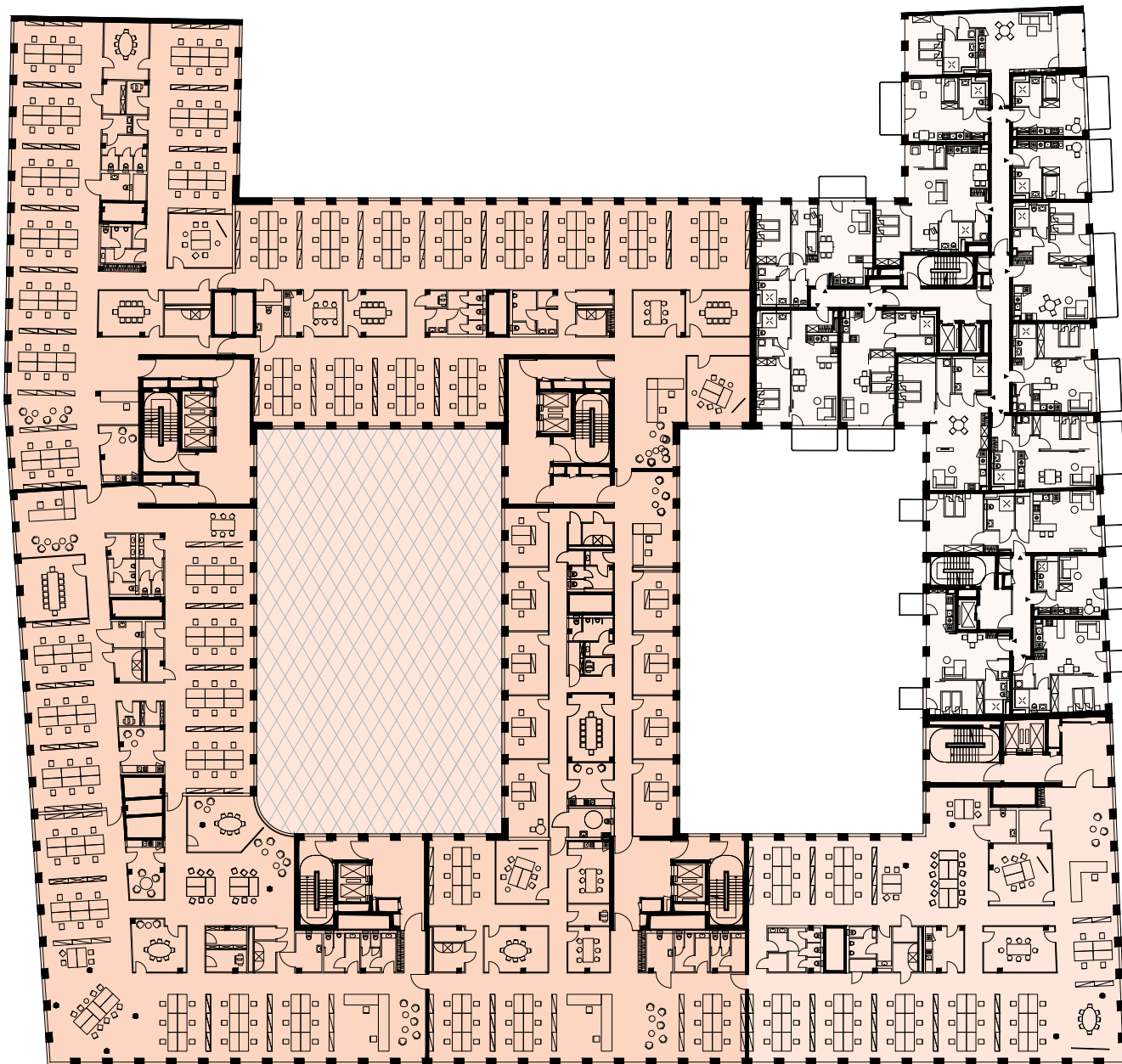


A question of size – with three spacious answers. A, B, or everything.

Headquarters in the capital: the entire office ensemble comprising approximately 31,900 m² GFA as a statement piece with a plethora of potential – for big ideas and bigger businesses.

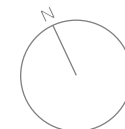
One of the two buildings: either the large atrium building (26,800 m² GFA) with its work-optimized contiguous floorplans, or the expressive corner building (5,100 m² GFA) with access to the green courtyard.

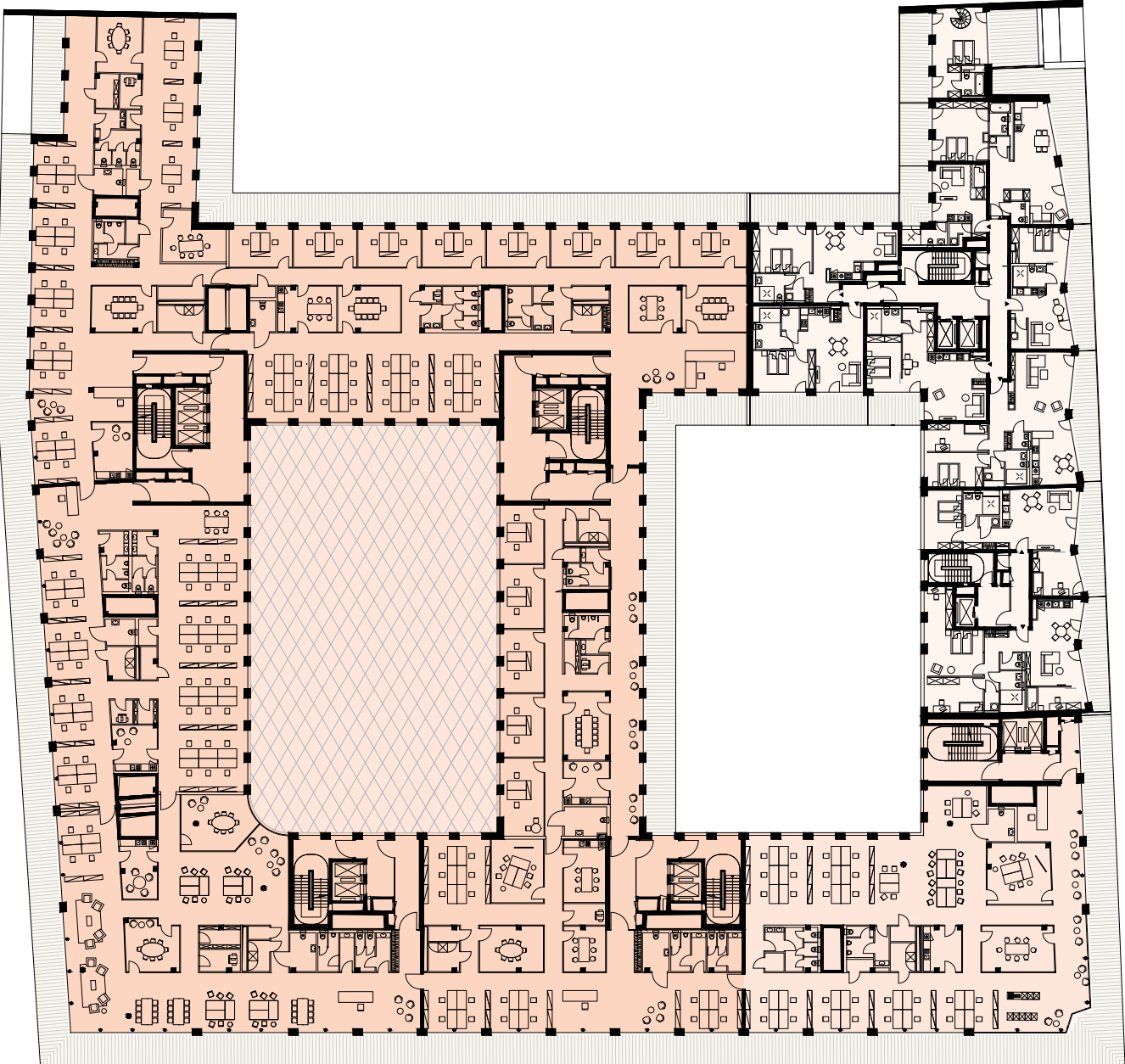




Atrium building
3.900 m² per floor

Corner building
800 m² per floor







FORTY4

Ensemble address:

Stralauer Allee 44–47
Warschauer Platz 1–5
Naglerstraße 22–26
10245 Berlin

Do you have questions?

contact@forty4.de
T +49 151 670 13 989

L & L Immobilien GmbH
represented by:
BML Projekte GmbH
Uhlandstr. 85
10717 Berlin

The images and information used in this brochure are non-binding and only serve to provide a first impression of the project. Therefore, no contractually agreed or promised qualities and related claims can be derived from them.